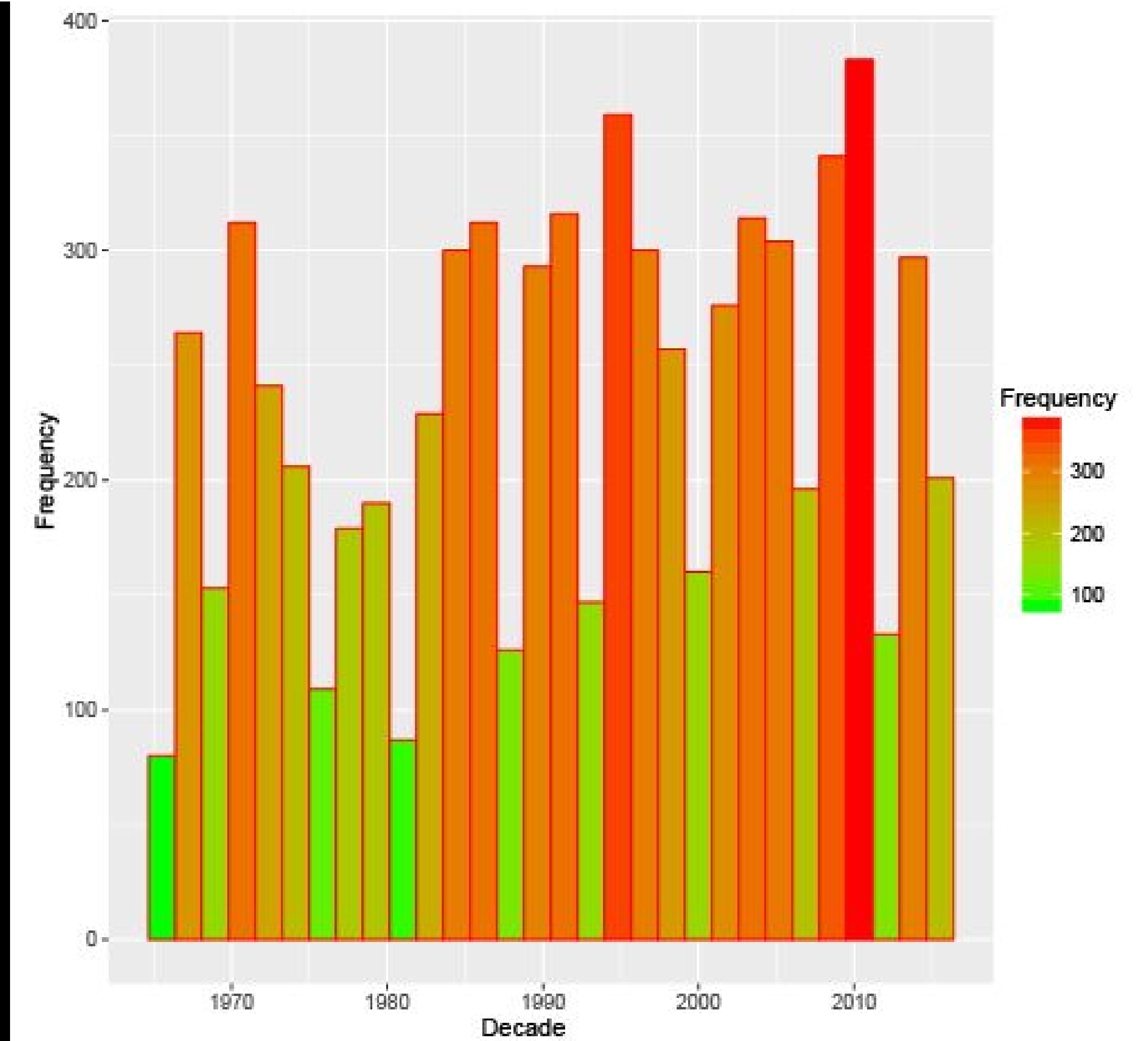
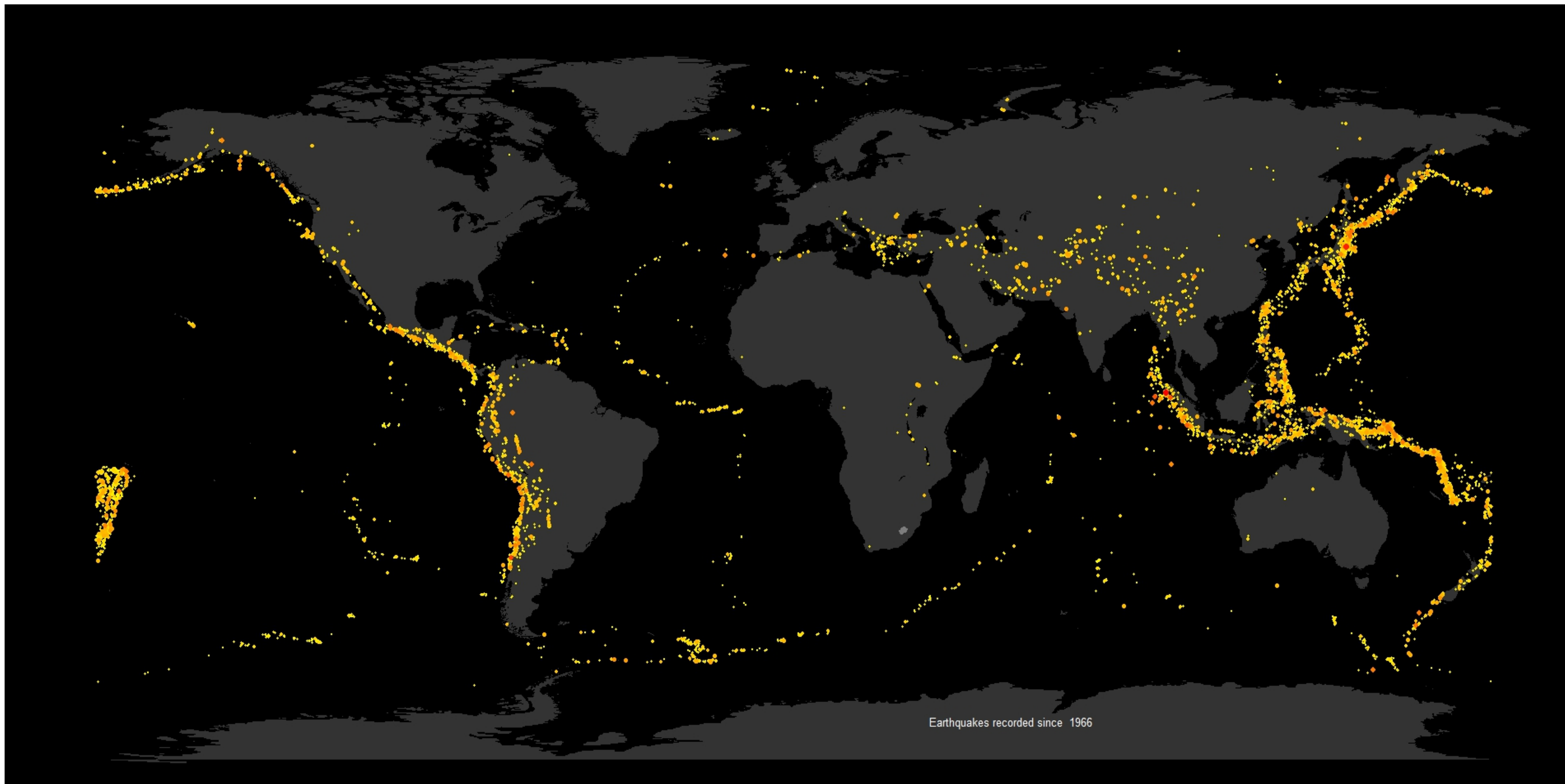


EARTHQUAKES - PAST AND PRESENT (1966-2016)

Visualization

This visualization shows global earthquake frequency and location over time. The combination of these two graphics shows just how active the planet is and shows the steady increase of activity over time. The yellow dots on the world map represent every earthquake that has taken place in the last 50 years. The chart represents earthquake frequency by decade showing an overall increase in earthquake count as time progresses. One could guess 2010 will be topped by 2020.



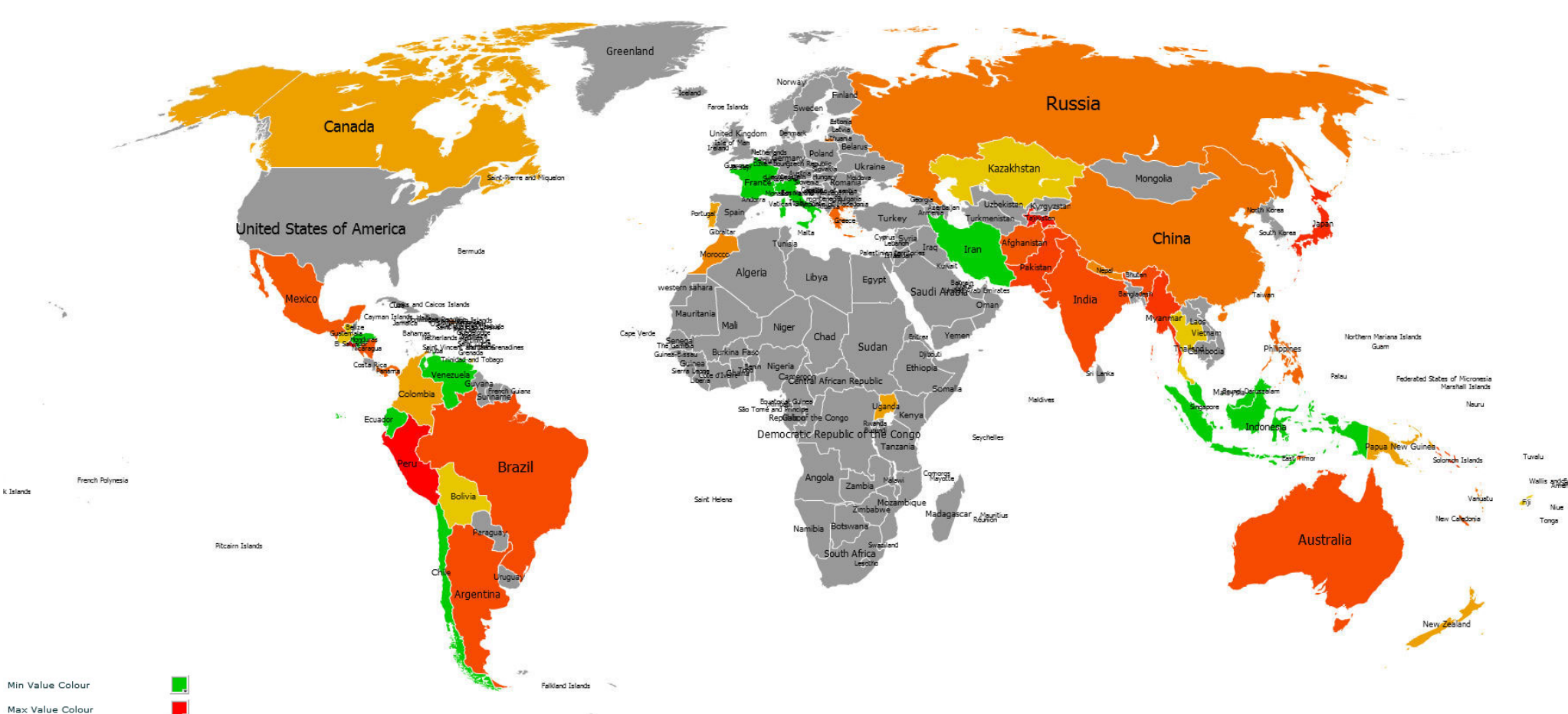
Audience

The audience could cover a broad range of types working in disaster risk management, the scientific community (like geo sciences), governmental agencies or construction companies. As the world becomes more aware of the frequency and threat of earthquakes the audience will expand further to media and individual interest.

Sketches

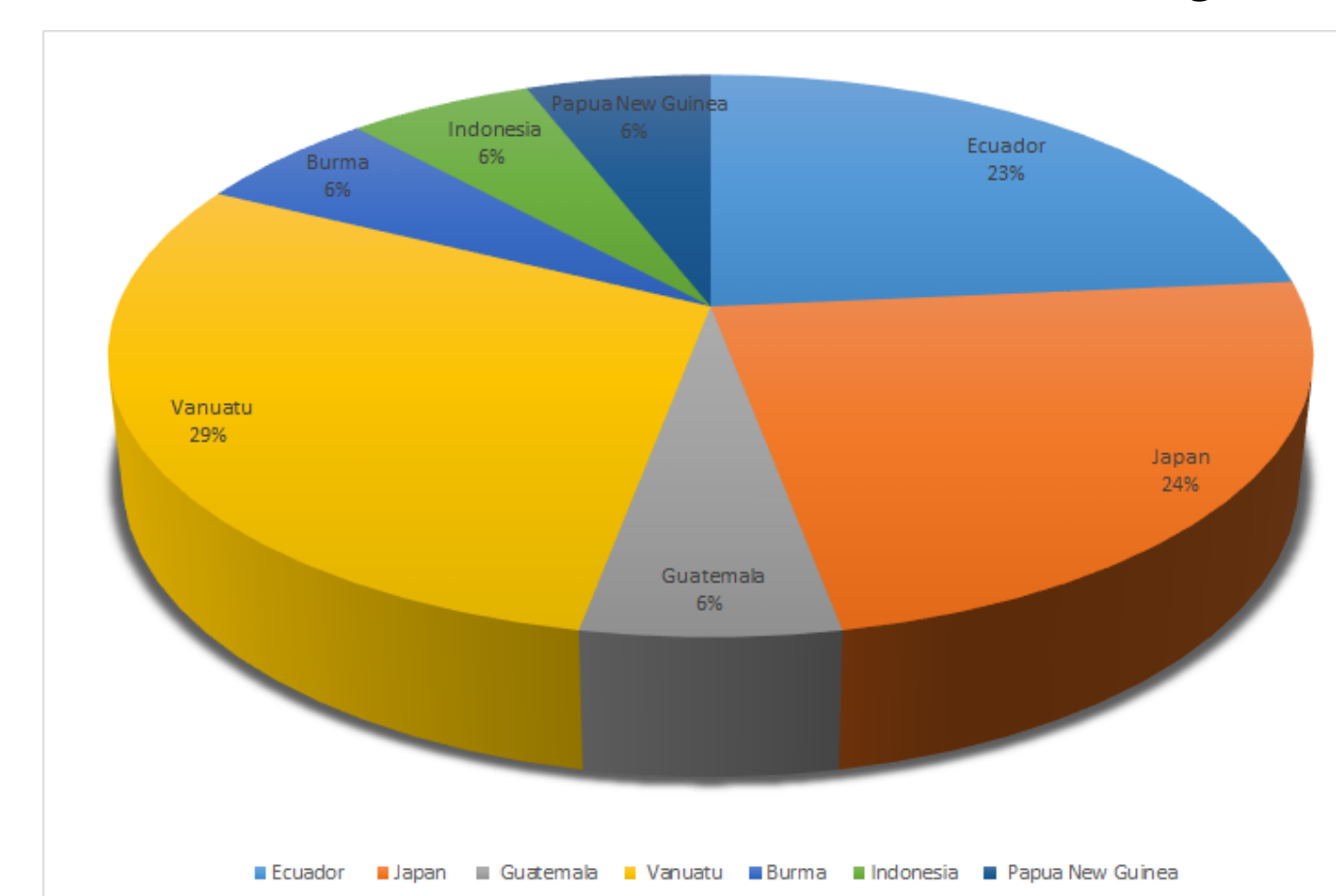
What parts of the world have the most earthquake activity?

Sketch 1 - Heat map of earthquake activity of 6.0 or greater magnitude over the last 30 days.



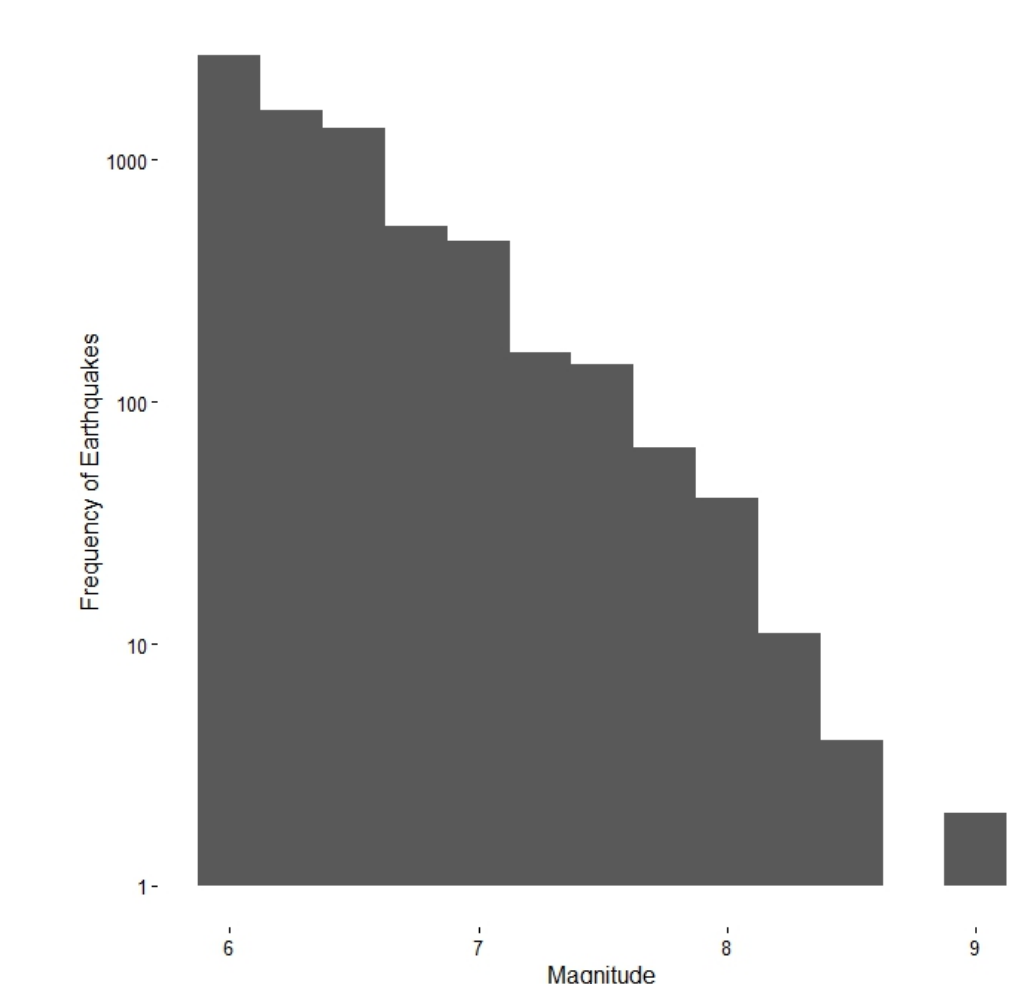
Which countries have the most recent earthquake activity?

Sketch 2 - Most active countries in the last 30 days.



Is there a correlation between the magnitude and frequency of the quakes?

Sketch 3 - Visualization of how magnitudes are distributed.



Data Source

The dataset used are from earthquake.usgs.gov. The heat map was created at <http://lert.co.nz/map/> using a dataset from earthquake.usgs.gov.